

# LCT

## Laser Die Cutter

High quality

High efficiency

High productivity



LCT -350

iECHO LCT350 laser die-cutting machine is a high-performance digital laser processing platform integrating automatic feeding, automatic deviation correction, laser flying cutting, and automatic waste removal. The platform is suitable for different processing modes such as roll-to-roll, roll-to-sheet, sheet-to-sheet, etc. It is mainly used in the process of full cutting, half cutting, flying line, punching and waste removal of non-metallic materials such as sticker, PP, PVC, cardboard and coated paper. The platform does not require cutting die, and uses electronic files import to cut, providing a better and faster solution for small orders and shorter lead times.

## Features



### Material shortage alarm

Feeding end is detected by a photoelectric sensor, and the machine automatically stops running and alarms when there is no paper.



### High speed cutting

The cutting laser line speed can reach 8 000 mm/s, and the maximum feeding speed can reach 90 m/min.



### Simple automation

CAM/CAD computer control only requires the input of cutting files in the software. Change the cut shape on the fly.



### Quick switch

No need for a mold, you can cut your design product at any time. No need to wait.



### QR code scanning supports dynamic image change

The best partner for digital printing presses.



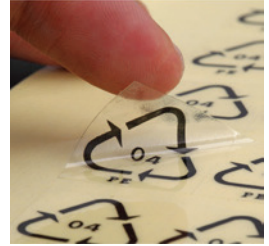
### Flexible and Multipurpose

Full cut, half cut, perforated, engraved, marked, multiple functions.



## Application

Suitable for film-based post-press processing. The main materials are: PET, PC, PVC, ABS, PE, PP, BOPP and composite films.



## Parameters

LCT 350			
Maximum feeding speed	1500mm/s	Graphic format supported	AI /BMP /PLT /DXF /DS /PDF
Die cutting accuracy	±0.1mm	Appearance size (L×W×H)	3950mm×1350mm×2100mm
Maximum cutting width	350mm	Equipment weight	2000kg
Maximum cutting length	Unlimited	Power supply	380V 3P 50HZ
Maximum material width	390mm	Dimensions of the chiller	550mm*500mm*970mm
Maximum outer diameter	700mm	Working environment	15-40℃

